



**VETRATA SPAZIO 40**  
**GLASS WINDOW SPAZIO 40**  
**VITRE SPAZIO 40**  
**GLASFENSTER SPAZIO 40**

**Preinstallazione**  
**Pre-installation**  
**Pré-installation**  
**Vorinstallation**

**effe**

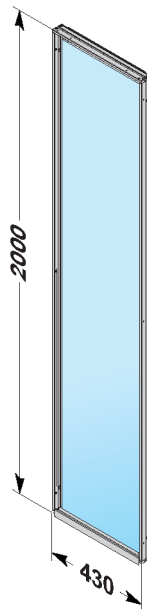
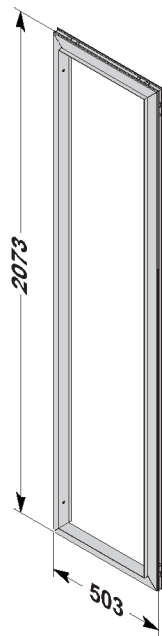
PERFECT WELLNESS  
BY EFFEGIBI



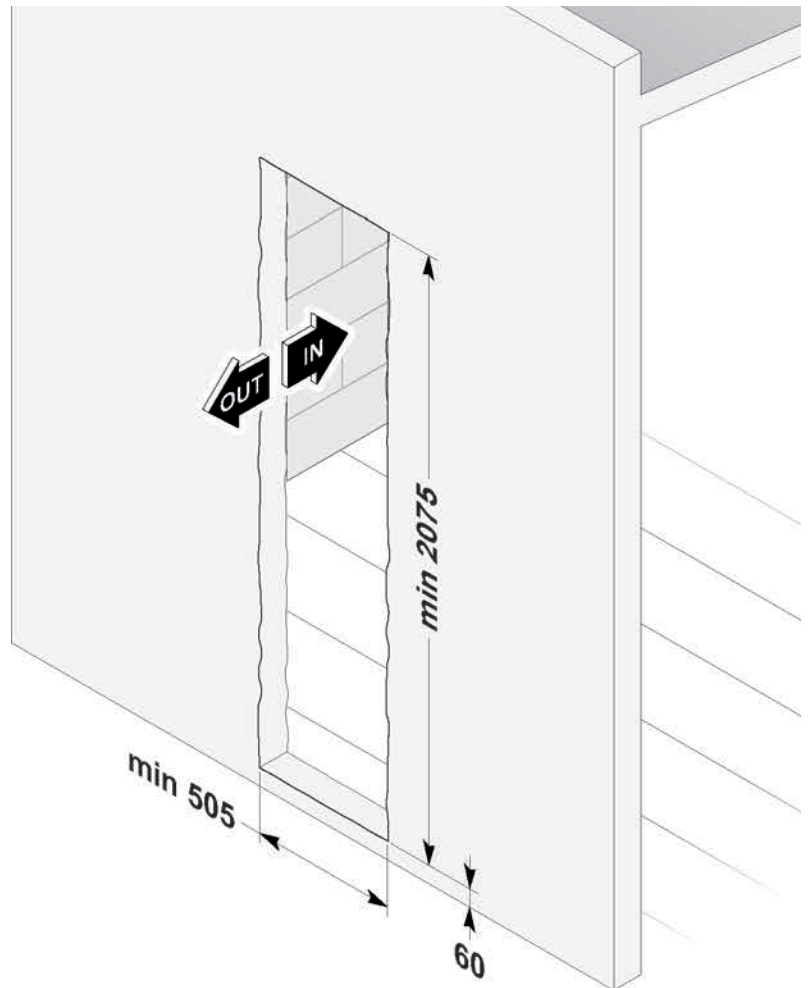
---

**IT   INSTALLAZIONE CONTROTELAIO**  
**EN   SECONDARY FRAME INSTALLATION**  
**FR   INSTALLATION DU CONTRECHÂSSIS**  
**DE   MONTAGE DER ZARGE**

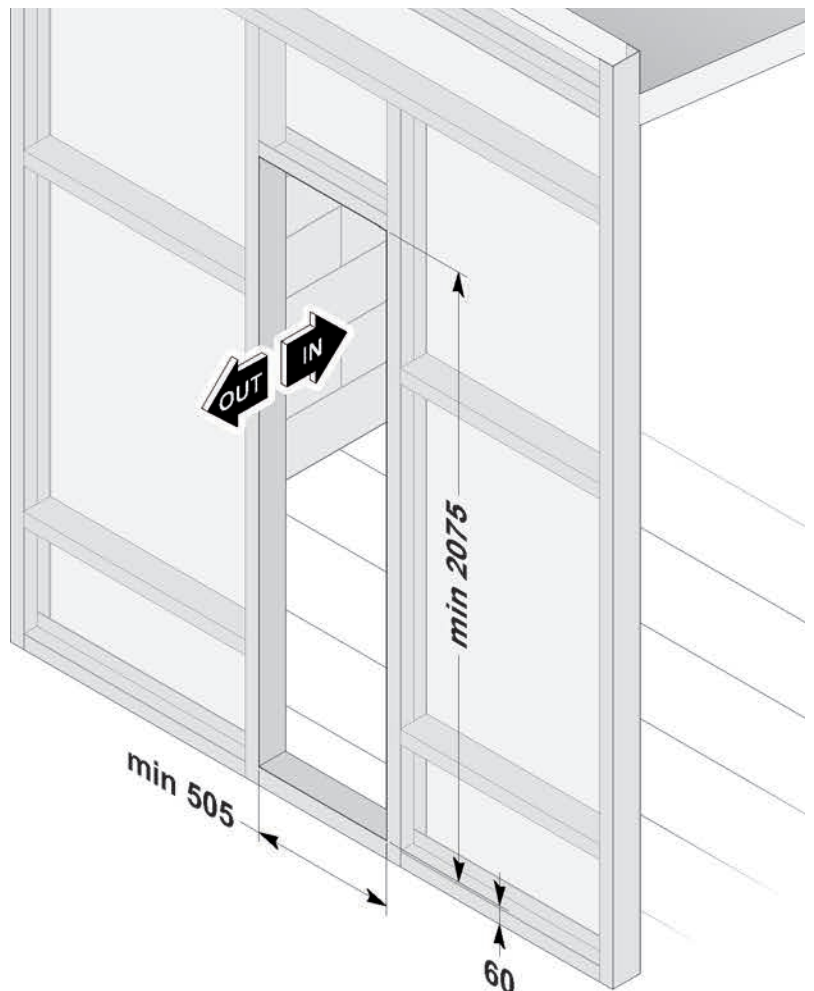
- IT**   Qualora non siano state effettuate o rispettate le indicazioni riportate nella presente scheda di preinstallazione, Effe non autorizza l'installazione e non si ritiene responsabile per un eventuale errato funzionamento del prodotto e per danni che il prodotto stesso potrebbe subire o arrecare a cose o persone.
- EN**   In case all the requirements reported in the present pre installation file are not properly implemented and followed, Effe does not allow the installation and does not retain itself responsible for any possible malfunctioning of the product and for any damages the product itself may be subjected to or may cause to things or people.
- FR**   Au cas où les démarches indiquées dans la fiche de pré installation n'ont pas été suivies, Effe n'autorise pas l'installation et décline toute responsabilité en cas d'un possible mauvais fonctionnement de l'appareil ainsi que pour les potentiels dégâts causés au générateur même, ainsi que aux personnes et aux biens.
- DE**   Falls die Hinweise dieser Montageanleitung nicht in Betracht gezogen wurden, wird die Installation von Effe nicht genehmigt und Effe lehnt jede Verantwortung ab wenn das Gerät nicht funktioniert oder falls es Schäden an Personen oder Sachen verursacht.



Dimensioni vano (parete in muratura)  
Cubicle size (brickwork wall)  
Dimension de la pièce (paroi en maçonnerie)  
Raummaße (Wand aus Mauerwerk)



Dimensioni vano (parete in cartongesso)  
Cubicle size (plasterboard wall)  
Dimension de la pièce (paroi en placoplâtre)  
Raummaße (Wand aus Gipskarton)

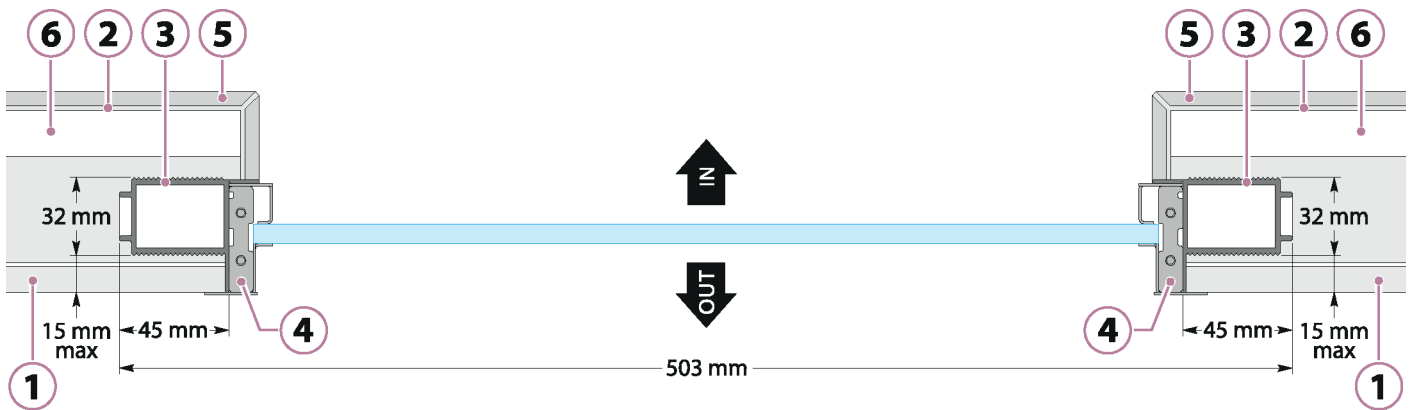


**ATTENZIONE:** il lato esterno del controtelaio deve essere a filo con la piastrellatura

**WARNING:** the external side of the counterframe must be flush with the tiles

**ATTENTION:** le côté extérieur du contre - châssis doit être au ras du carrelage

**ACHTUNG:** die aussenseite der Zarge muss bündig sein mit den Fliesen



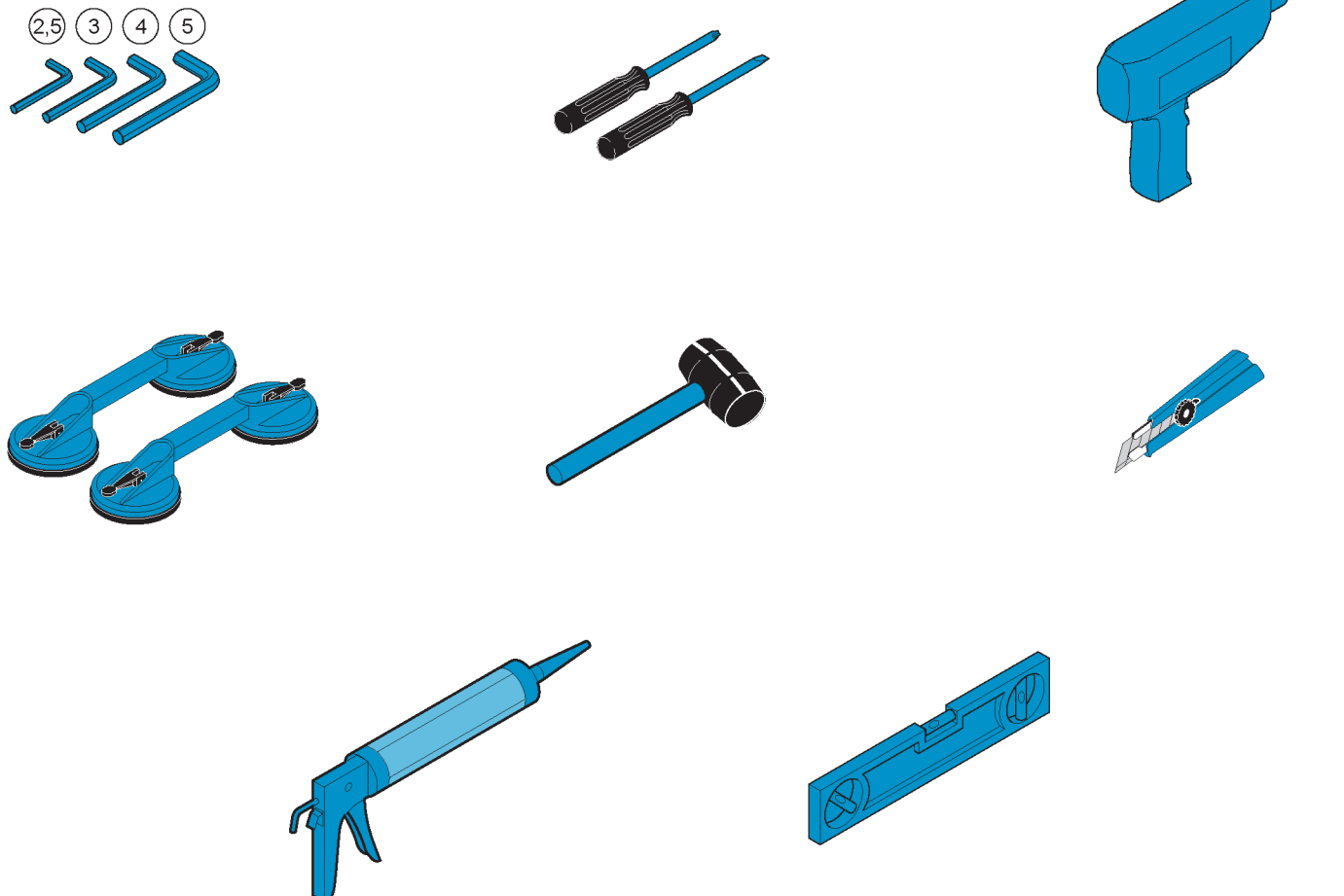
- |   |   |  |
|---|---|--|
| <b>1</b>   Intonaco o rivestimento esterno (OUT)<br>External plaster or covering (OUT)<br>Enduit ou revêtement externe (OUT)<br>Aussenputz oder Aussenverkleidung (OUT) | <b>3</b>   Controtelaio<br>Counterframe<br>Contre-châssis<br>Türzarge               | <b>5</b>   Rivestimento interno (IN)<br>Internal covering (IN)<br>Revêtement intérieur (IN)<br>Innenverkleidung (IN) |
| <b>2</b>   Colla<br>Adhesive<br>Colle<br>Leim   | <b>4</b>   Telaio vetrata<br>Glass window frame<br>Châssis vitre<br>Scheibenrahmens | <b>6</b>   Pannelli coibentanti<br>Insulating panels<br>Panneaux isolants<br>Dämmplatten                             |

## IT ATTREZZATURA NECESSARIA PER L'INSTALLAZIONE

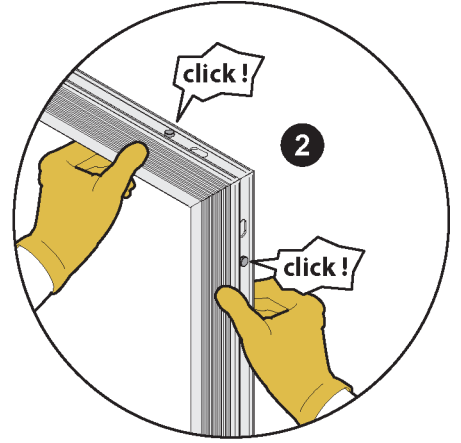
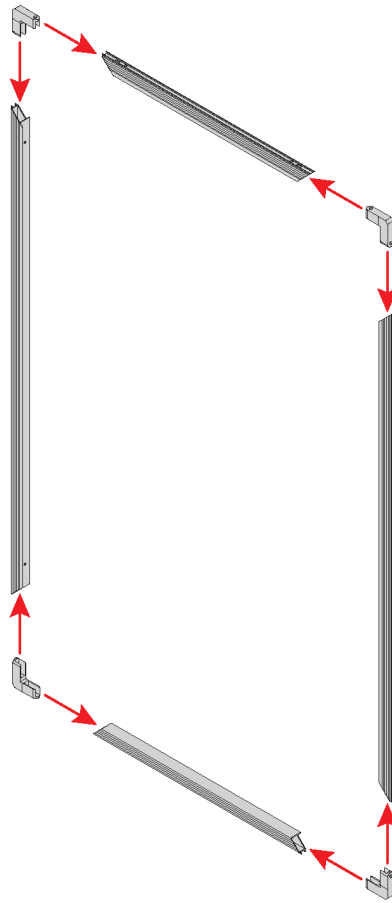
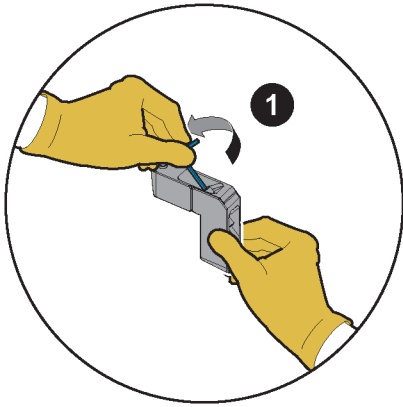
## EN TOOLS REQUIRED FOR INSTALLATION

## FR OUTILLAGE NÉCESSAIRE POUR L'INSTALLATION

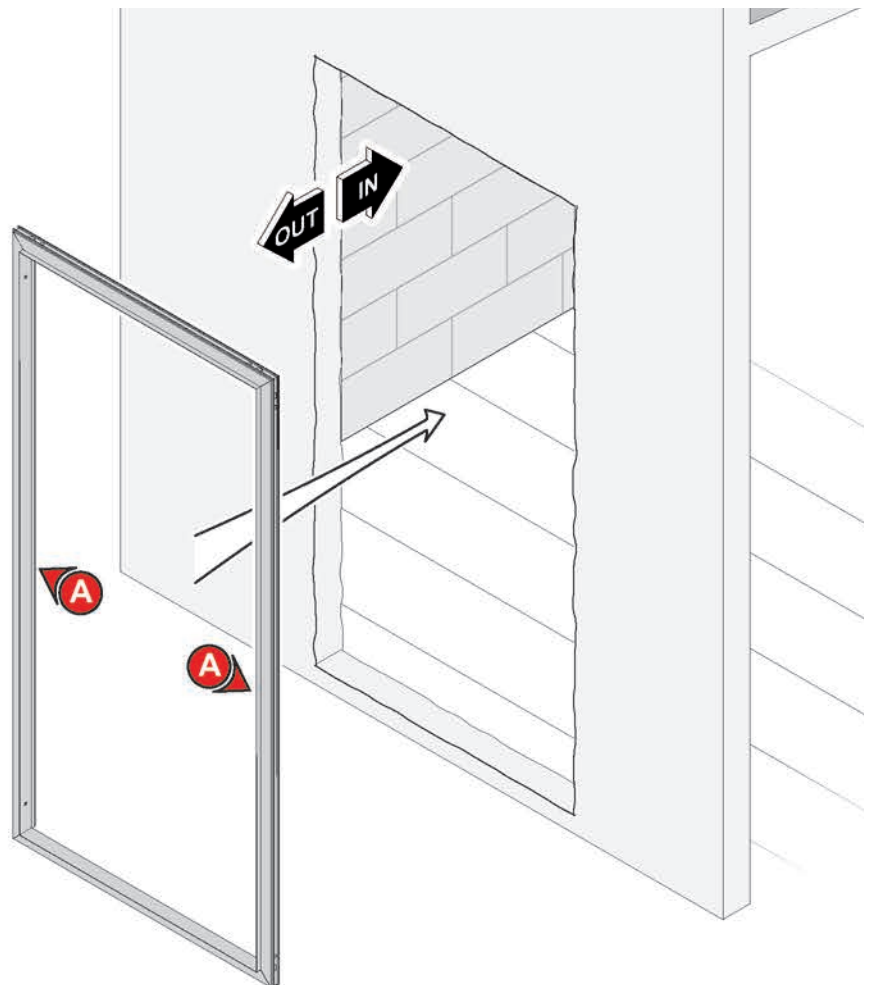
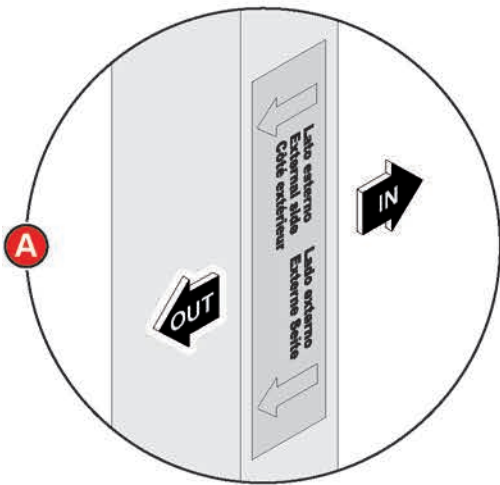
## DE FÜR DIE MONTAGE BENÖTIGTES WERKZEUG



# 1

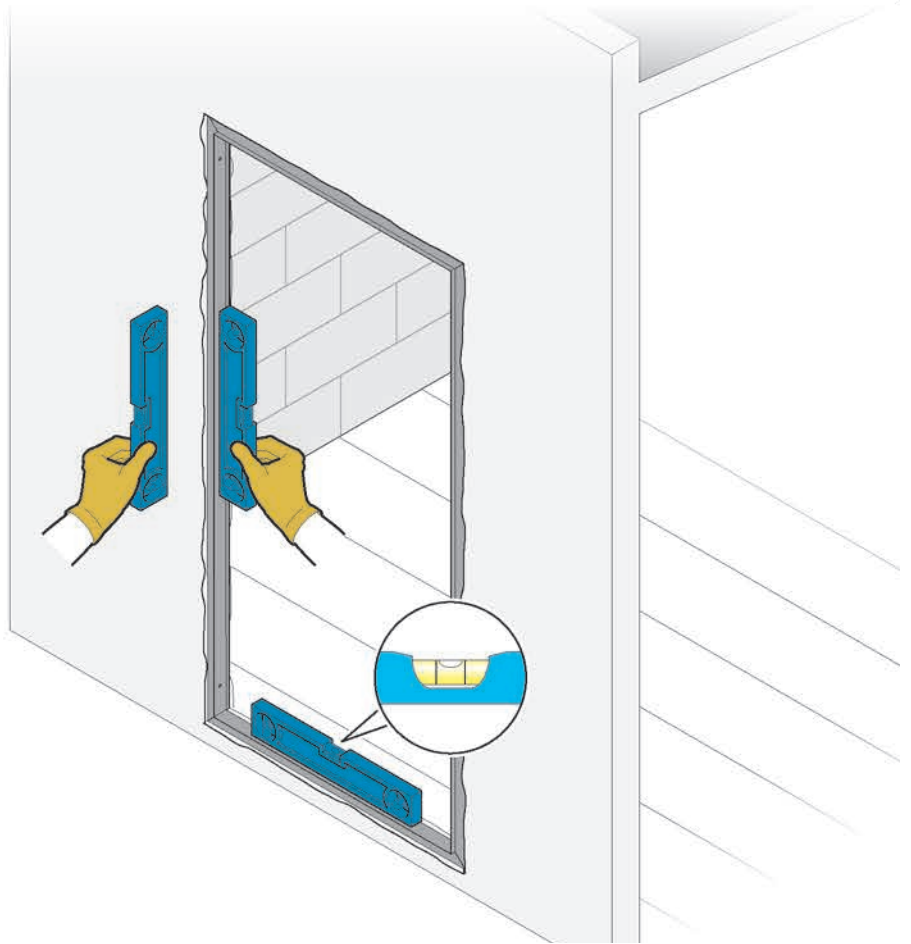


# 2



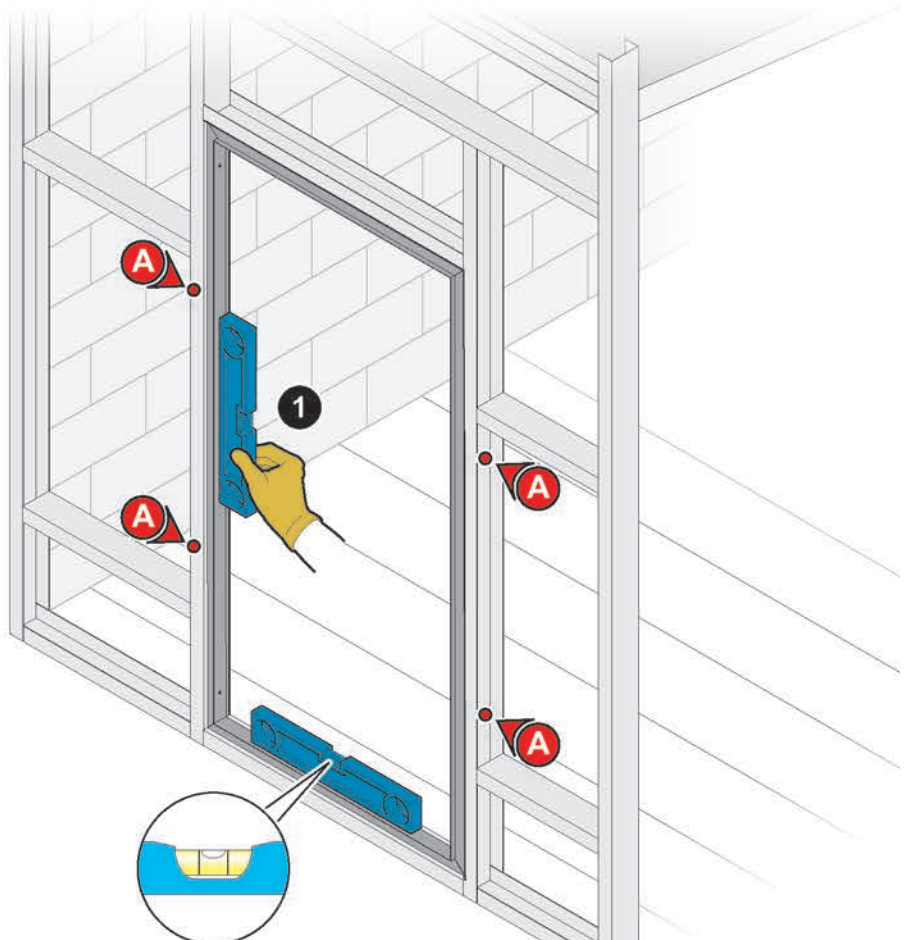
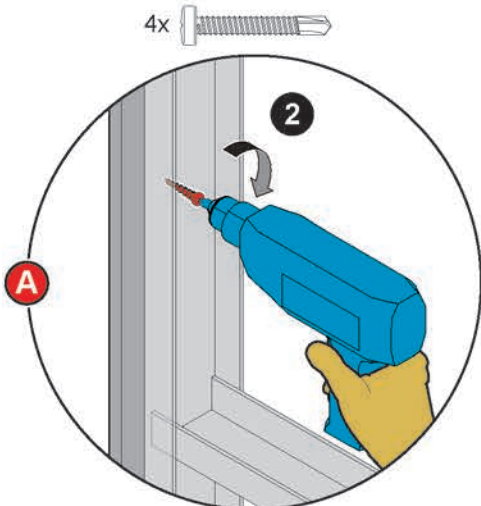
# 3

(parete in muratura)  
(brickwork wall)  
(paroi en maçonnerie)  
(Wand aus Mauerwerk)



# 3

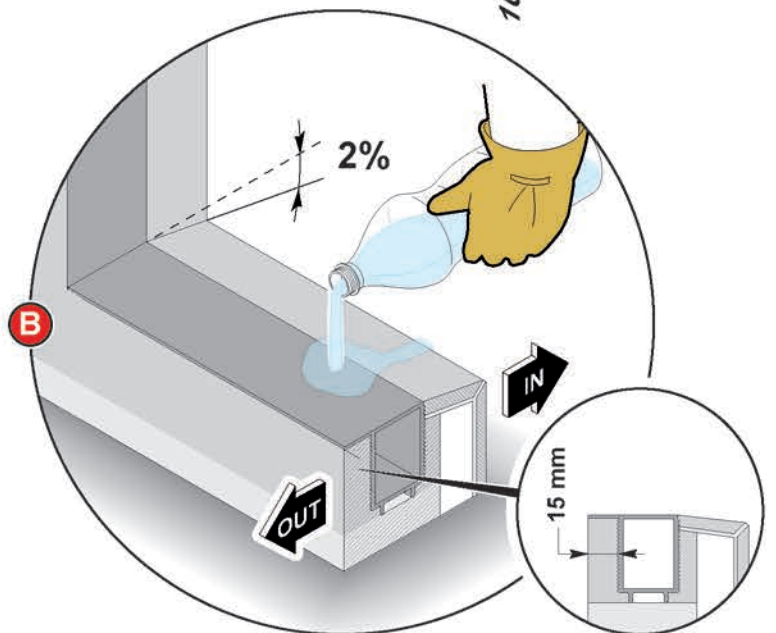
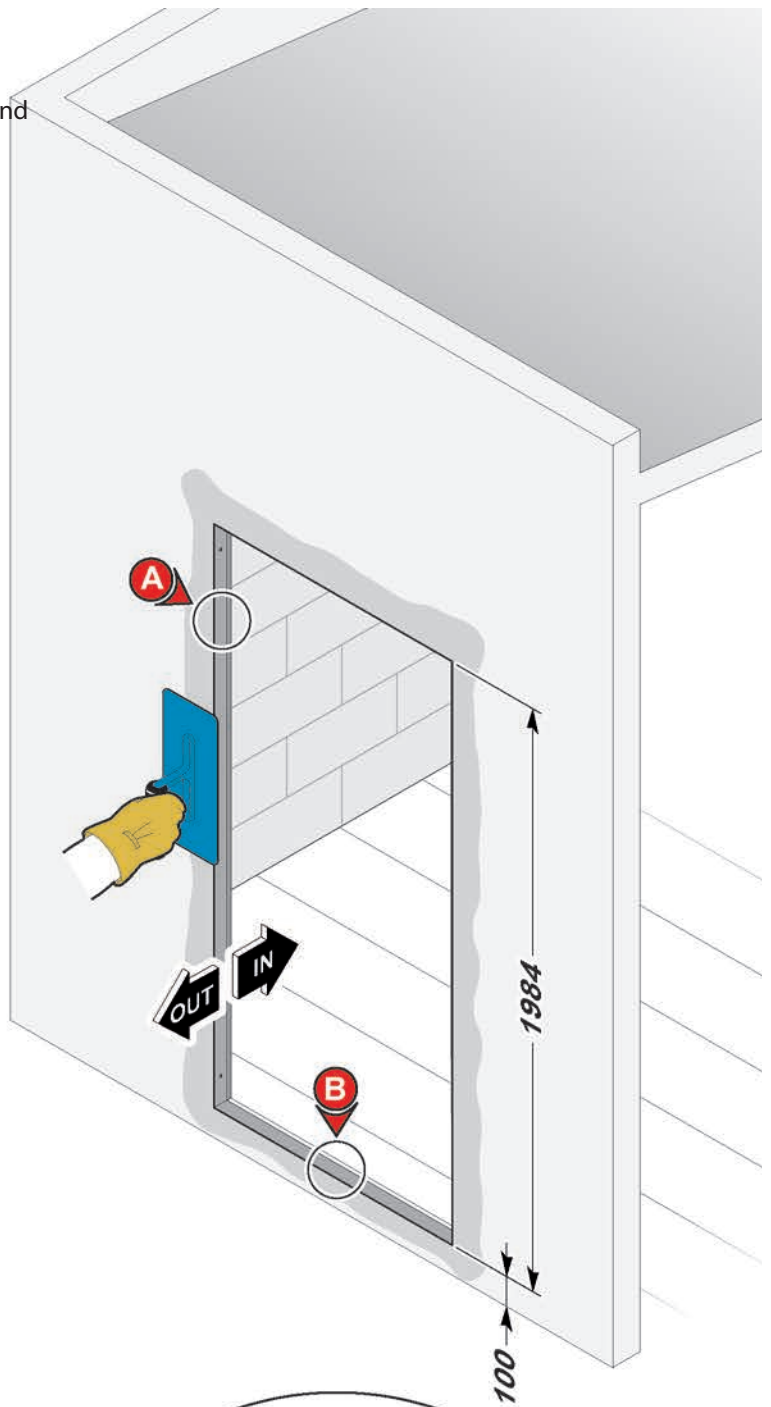
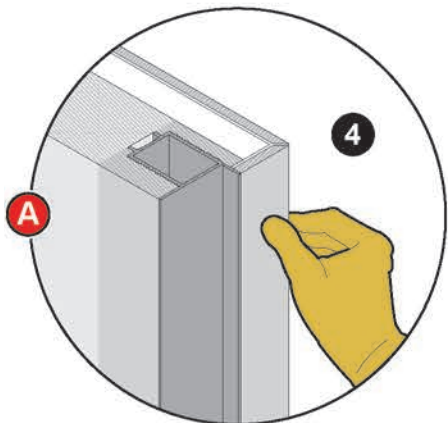
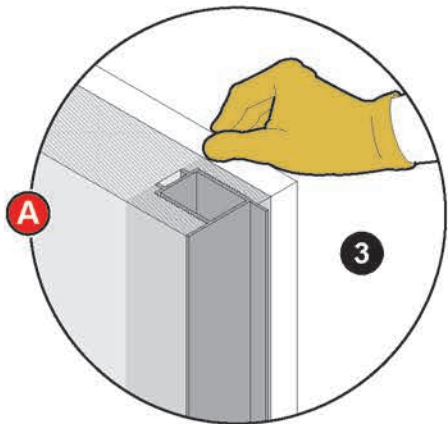
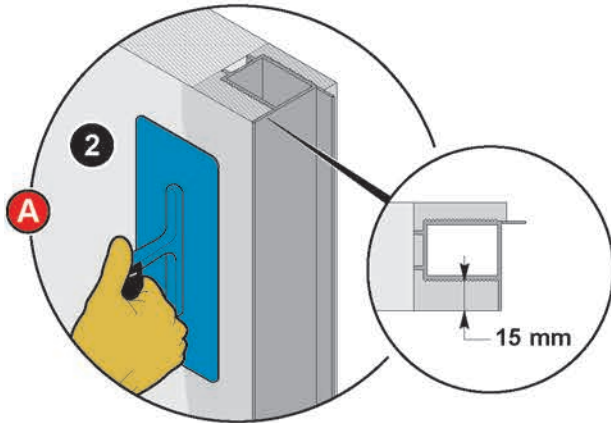
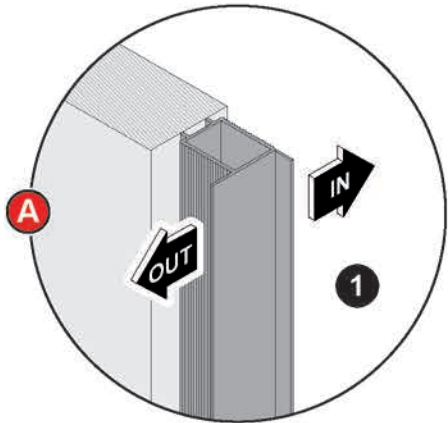
(parete in cartongesso)  
(plasterboard wall)  
(paroi en placoplâtre)  
(Wand aus Gipskarton)





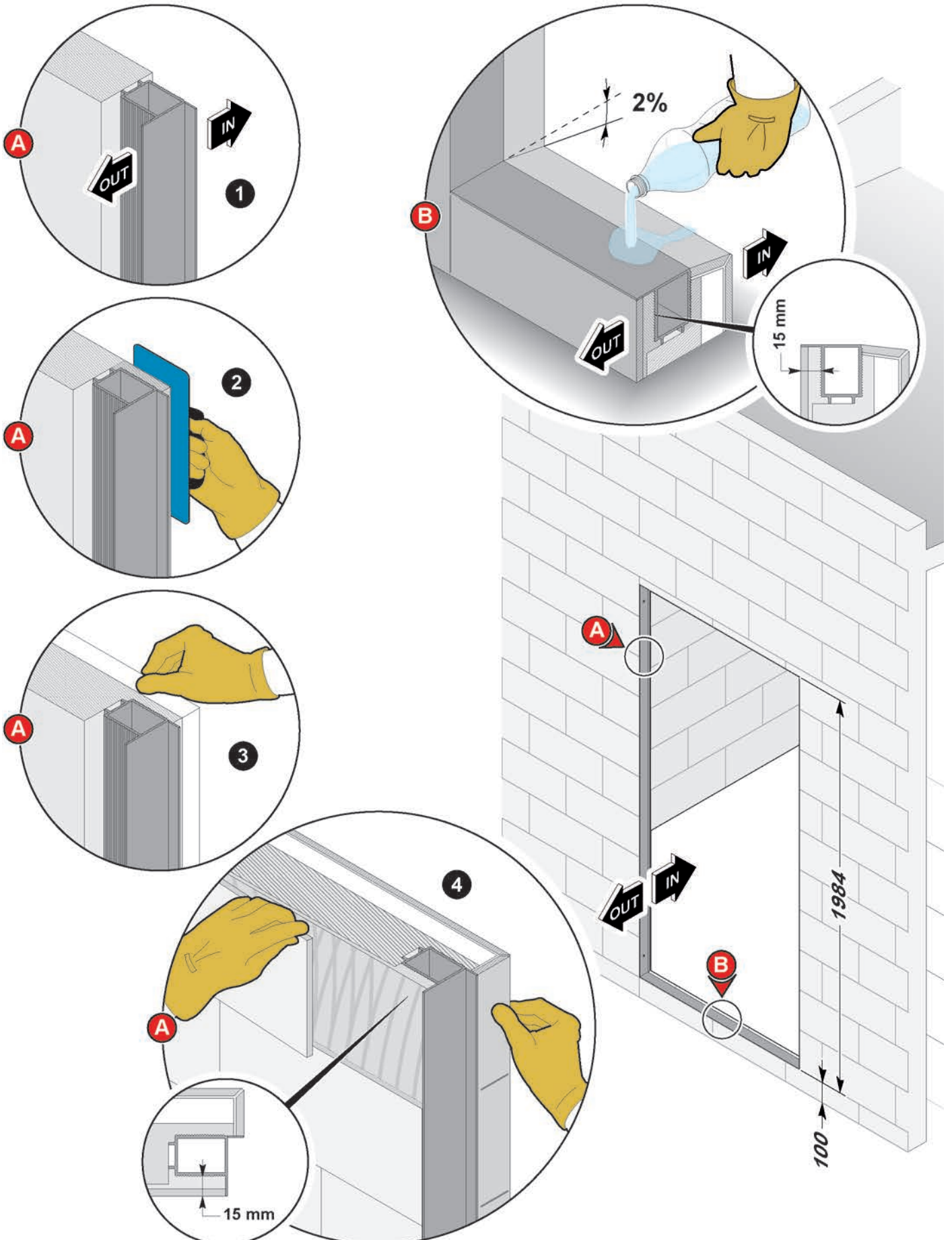
# 4

Finitura della parete esterna intonacata  
External wall finish, plasterwork  
Finition de la paroi externe enduite  
Endbearbeitung der verputzten Außenwand



# 4

Finitura della parete esterna piastrellata  
External wall finish, tiled  
Finition de la paroi externe carrelée  
Endbearbeitung der verfliesen Außenwand





**effe**  
PERFECT WELLNESS  
BY EFFEGIBI

Via Gallo 769  
47522 Cesena (FC)  
Italy

tel +39 0547 372881  
fax +39 0547 372924

[www.effe.it](http://www.effe.it)  
[info@effegibi.it](mailto:info@effegibi.it)